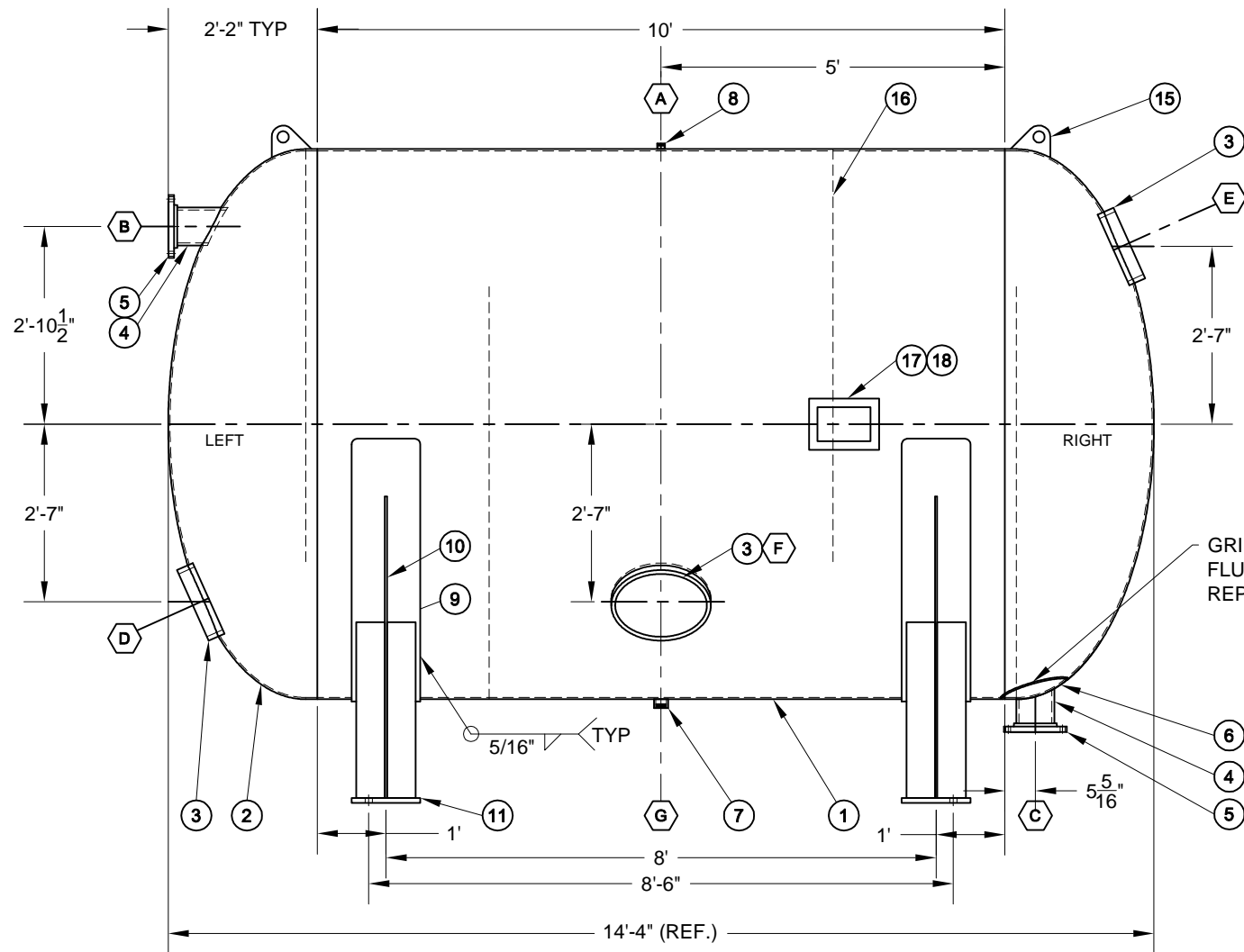


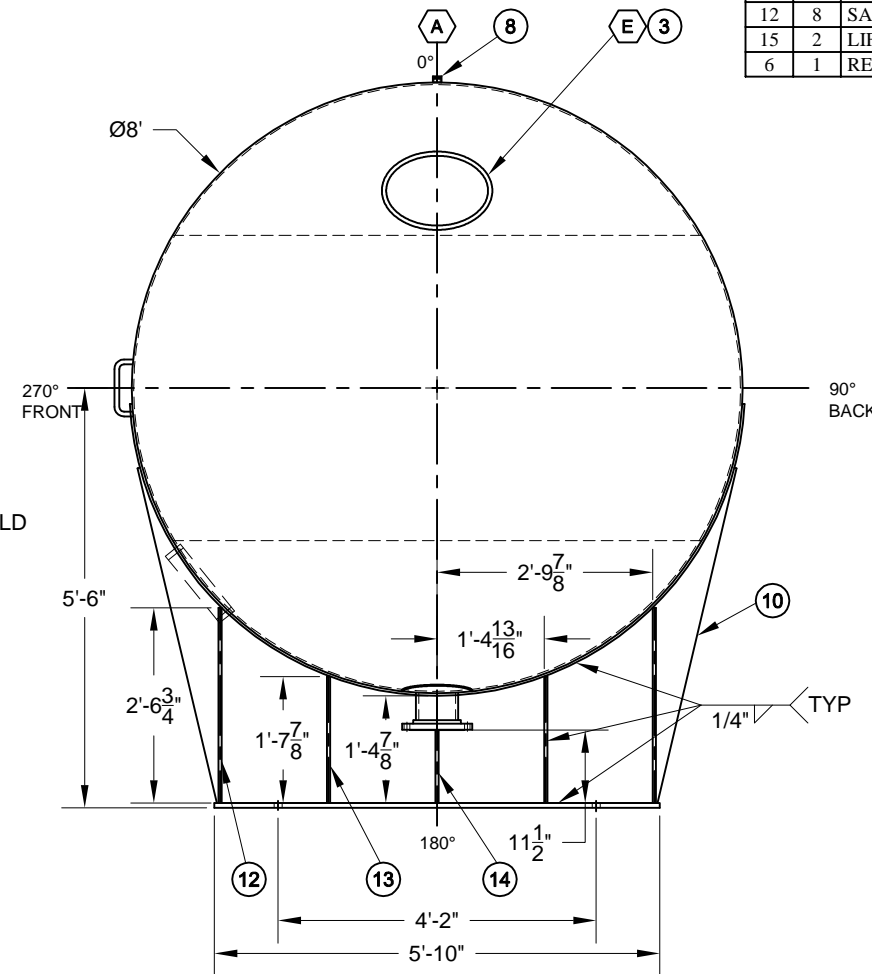
NOTES:

- All welds shall be neat in appearance, free of slag and other defects.
- Vessel to be cleaned of scale, oil, weld splatter and all foreign material prior to hydrostatic test.
- Remove all sharp edges on nozzles (1/8" minimum radius)
- All Nozzles to support nominal loads only.
- Vessel weight (approx. dry) 6,600 lbs
Vessel weight (approx. test) 47,000 lbs
- Capacity 640 cu.ft.
- Fluid: Water
- Manway - Clark Kennedy Co. CRN: 0H7379.5C
- Repad to have min. 1/8" telltale hole

Bill of Materials			Material
Item	Qty	Description	
1	1	SHELL: 5/16" ROLLED PLATE	SA-516 70
2	2	HEAD: 2:1 SE, 96"OD, 5/16" THK, .282" MTAF, 1.5" SF	SA-516 70
8	1	HALF CPLG: 3/4" 3000# NPT	SA-105
4	2	PIPE: 6" SCH80	SA-106B
5	2	FLANGE: 6" 150# RFSO	SA-105
3	3	MANWAY: 12" x 16" c/w 3/4" x 4" RING	SA-106B/SA-516 GR.70
7	1	HALF COUPLING: 1 1/2" 3000# NPT	SA-105
17	1	CODE NAMEPLATE BRACKET	SA-516 70
18	1	CODE NAMEPLATE	STAINLESS
16	4	BAFFLE: 1/4" THICK	SA-516 70
9	2	WEAR PLATE: 12" WIDE x 3/8" THICK	SA-36
10	2	SADDLE PLATE: 3/8" THICK	SA-36
11	2	BASEPLATE: 70" x 12" x 3/4"	SA-36
14	4	SADDLE RIB: 16.88" x 5" x 1/2"	SA-36
13	8	SADDLE RIB: 19.9" x 5" x 1/2"	SA-36
12	8	SADDLE RIB: 30.72" x 5" x 1/2"	SA-36
15	2	LIFT LUGS: 3/4" THICK	SA-516 70
6	1	REINFORCING PAD: 12" OD x 5/16" THICK	SA-516 70



FRONT VIEW



RIGHT END

Certified by
XYZ Vessel Corp.
(Name of Manufacturer)

U
W

75 psi (kPa) at 150 °F (°C)
Max. allowable working pressure (MAWP)

- psi (kPa) at - °F (°C)
Max. allowable external working pressure

-20 °F (°C) at 75 psi (kPa)
Minimum Design Metal Temperature (MDMT)

N-0000
Manufacturer's serial number

CRN 2007
Year built

Design Data

Design Code: ASME Code Section VIII Division 1, 2007 Edition

Design Pressure Internal: 75 psi @ 150°F

MAWP: 75 psi

Design Pressure External: N/A

MDMT: -20°F @ 75 psi

Hydro Test Pressure: 98 psi @ 55°F for 1/2 Hour

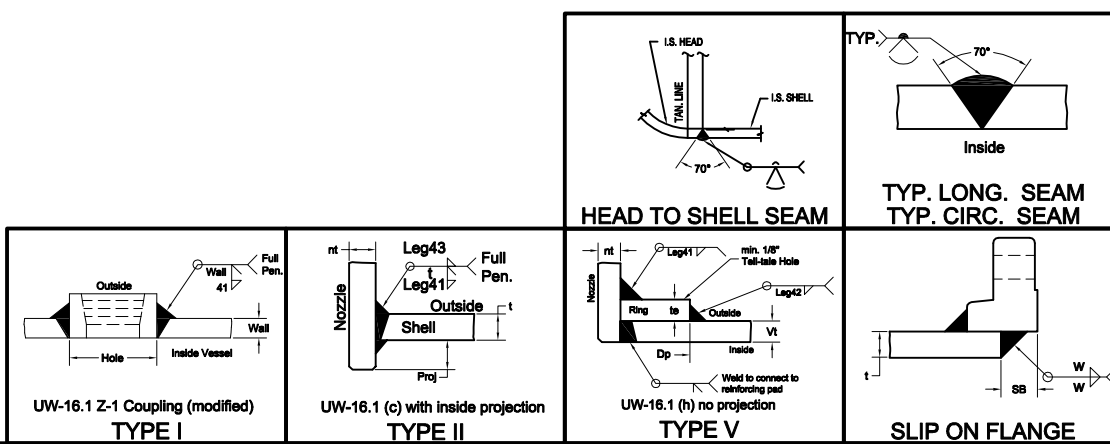
PWHT: None

Radiography: None

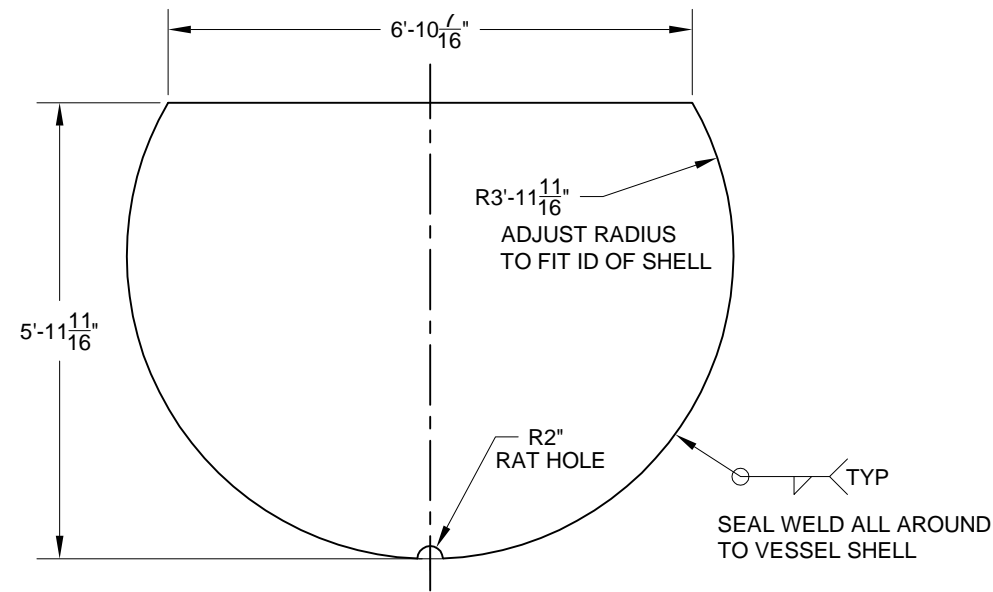
Corrosion Allowance: 0"

Impact Test: Exempt per UG-20(f)

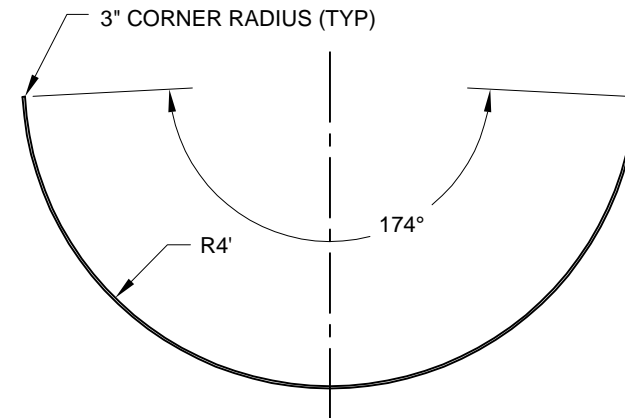
Nozzle Schedule										
Mark	Nozzle	Qty	Service	Type	Welds			SB	Weld (w)	Proj.
					Leg 41	Leg 42	Leg 43			
A	3/4"	1	VENT	I	1/4"	-	-	-	-	-
B	6"	1	INLET	II	5/16"	-	5/16"	5/8"	t	1"
C	6"	1	OUTLET	V	5/16"	1/4"	-	5/8"	t	-
D	12x16"	1	MANWAY	II	5/16"	-	5/16"	-	-	1"
E	12x16"	1	MANWAY	II	5/16"	-	5/16"	-	-	1"
F	12x16"	1	MANWAY	II	5/16"	-	5/16"	-	-	1"
G	1 1/2"	1	DRAIN	I	5/16"	-	-	-	-	-



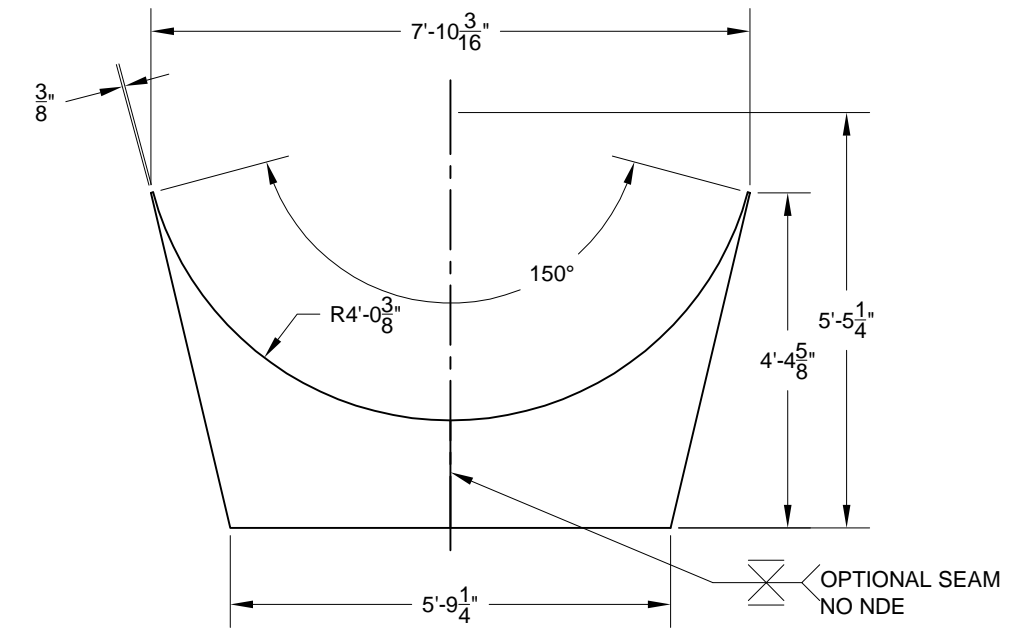
1	REVISED	10/20/08	ART
0	RELEASE	05/23/02	LB
REV	DESCRIPTION	DATE	INITIALS
REVISION HISTORY			
PVEng		Pressure Vessel Engineering 120 Randall Drive, Suite B, Waterloo, Ontario, N2V 1C6 P: 519.880.9808 F: 519.880.9810 http://www.pveng.com info@pveng.com	
HORIZONTAL RETENTION TANK			
SIZE: B	JOB ID: SAMPLE 3	DRAWING NO: SAMPLE 3	REV: 1
SCALE: 1:30	SHEET: 1 of 2		



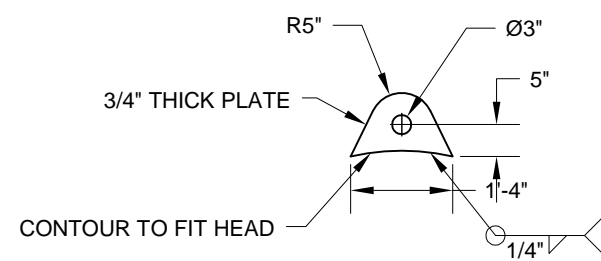
**BAFFLE
ITEM# 16**



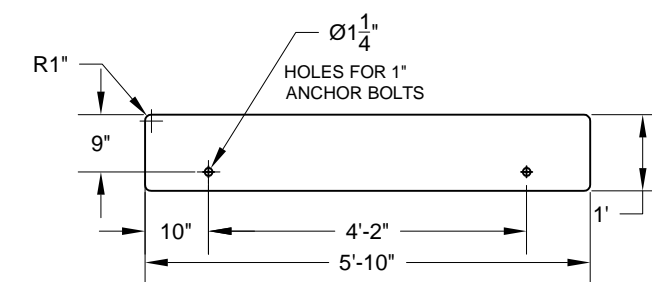
**WEAR PLATE
ITEM# 9**



**SADDLE PLATE
ITEM# 10**



**LIFTING LUG DETAIL
SCALE 1:4**



**BASEPLATE
ITEM# 11**

		Pressure Vessel Engineering 120 Randall Drive, Suite B, Waterloo, Ontario, N2V 1C6 P: 519.880.9808 F: 519.880.9810 http://www.pveng.com info@pveng.com	
		SIZE: B SCALE: 1:30	JOB ID: SAMPLE 3
		SHEET: 2 of 2	