

- NOTES:
- All welds shall be neat in appearance, free of slag and other defects
 - Vessel to be cleaned of scale, oil, weld splatter and all foreign material prior to hydrostatic test
 - Remove all sharp edges on nozzles (1/8" minimum radius)
 - All Nozzles to support nominal loads only
 - Vessel weight (approx. dry) 350 lbs
 - Vessel weight (approx. test) 500 lbs
 - Capacity 23 cu ft
 - Fluid: air

Certified by
 XYZ Vessel Corp.
 (Name of Manufacturer)

100 psi (kPa) at 300 °F (°C)
 Max. allowable working pressure (MAWP)

psi (kPa) at °F (°C)
 Max. allowable external working pressure

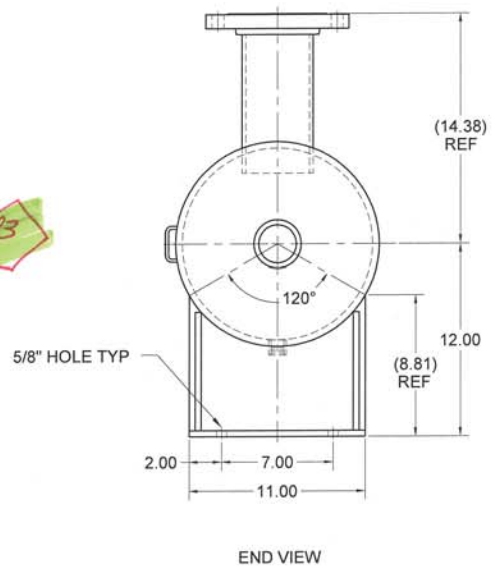
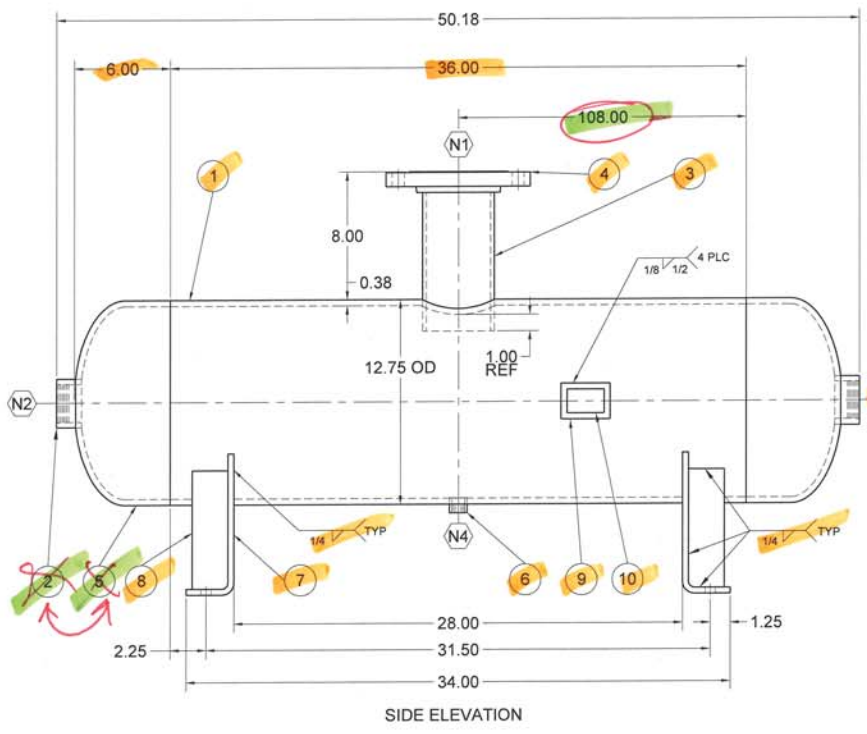
-40 °F (°C) at 200 psi (kPa)
 Minimum Design Metal Temperature (MDMT)

N-0000
 Manufacturer's serial number

CRN Year built

Bill of Materials			
Item	Qty	Description	Material
1	1	PIPE 12" SCH STD	SA-53B
2	2	PIPE CAP 14" SCH STD	SA-234 WPB
3	1	PIPE 4" SCH 80	SA-106B
4	1	FLANGE 4" 150# RSFO	SA-105N
5	2	HALF CPLG 2" 300# NPT	SA-105
6	1	HALF CPLG 3/4" 300# NPT	SA-105
7	2	PLATE 3/8" THICK	SA/CSA-G40.21 44W
8	4	PLATE 7-1/2" x 2" x 3/8" MTG REINFORCEMENT	SA/CSA-G40.21 44W
9	1	CODE NAMEPLATE BRACKET	SA/CSA-G40.21 44W
10	1	CODE NAMEPLATE	STAINLESS

CORRECT
 REVISED
 WRONG



Design Data

Design Code: ASME Code Section VIII Division 1, 2004 Edition, A06

Design Pressure Internal: 200 psi @ 300°F

MAWP: 200 psi

Design Pressure External: N/A

MDMT: -20°F @ 200 psi

Hydro Test Pressure: 260 psi @ ambient for 1/2 Hour

PWHT: None

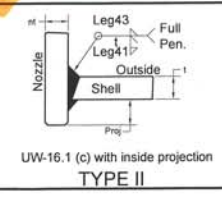
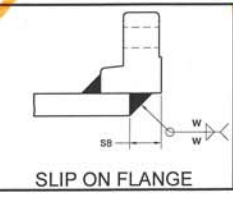
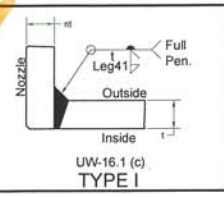
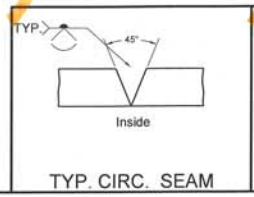
Radiography: None

Corrosion Allowance: 0"

Impact Test: Exempt per UG-20(f)

REV	DESCRIPTION	DATE	INITIALS
2	Updates	Aug 19/08	BEM
1	Updates	July 9/08	BEM
0	Release	June 23/08	BEM

Nozzle Schedule									
Mark	Nozzle		Flange		Welds			Flange	
	Size	Qty	Service	Type	Leg 41	Leg 42	Leg 43	SB	Weld (w)
N1	4"	1	VENT	II	1/2"	-	1/2"	1/2"	0.216"
N2	2"	1	INLET	I	1/2"	-	-	-	-
N3	2"	1	OUTLET	I	1/2"	-	-	-	-
N4	1/2"	1	DRAIN	I	1/2"	-	-	-	-



PVEng Pressure Vessel Engineering
 120 Randall Drive, Suite B, Waterloo, Ontario, N2V 1C5
 P: 519.880.9808 F: 519.880.9810
 http://www.pveng.com info@pveng.com

PVE SAMPLE 2
SAMPLE AUDIT VESSEL

REV: B
 JOB ID: Sample 2
 DRAWING NO: Sample 2
 SCALE: 1:8
 SHEET: 1 of 1