

8

7

6

5

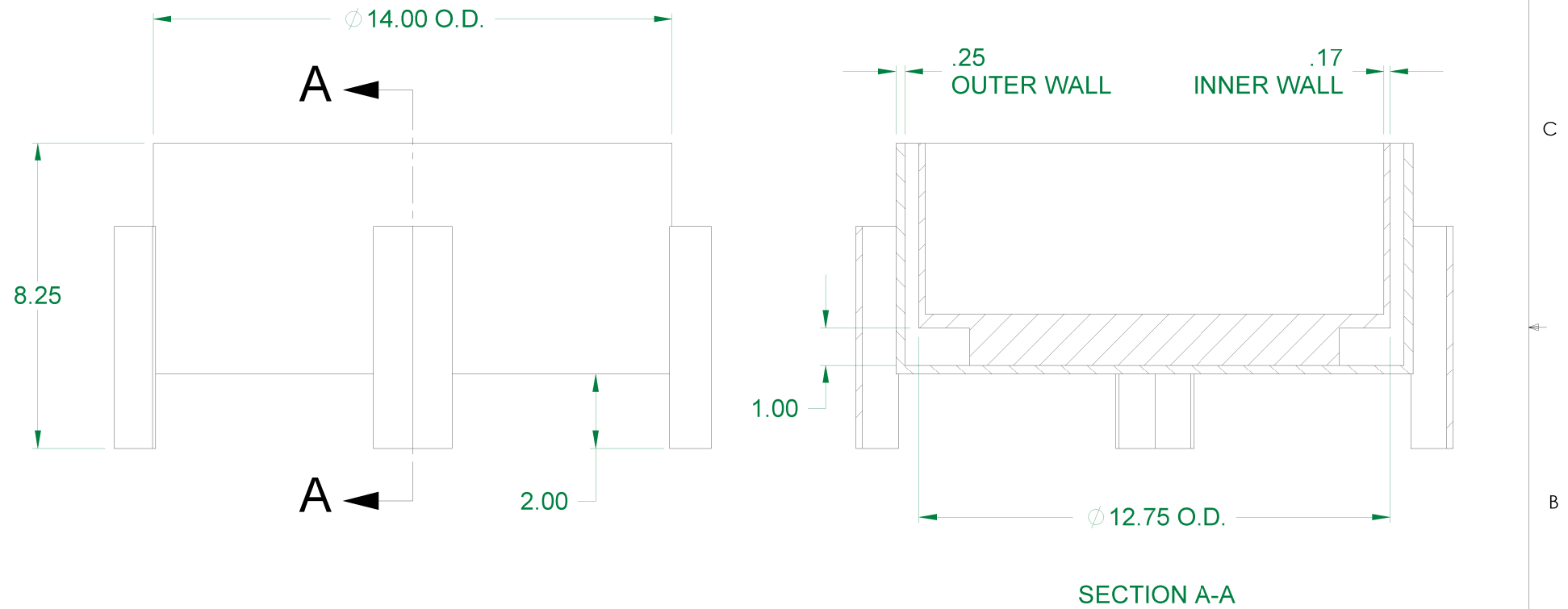
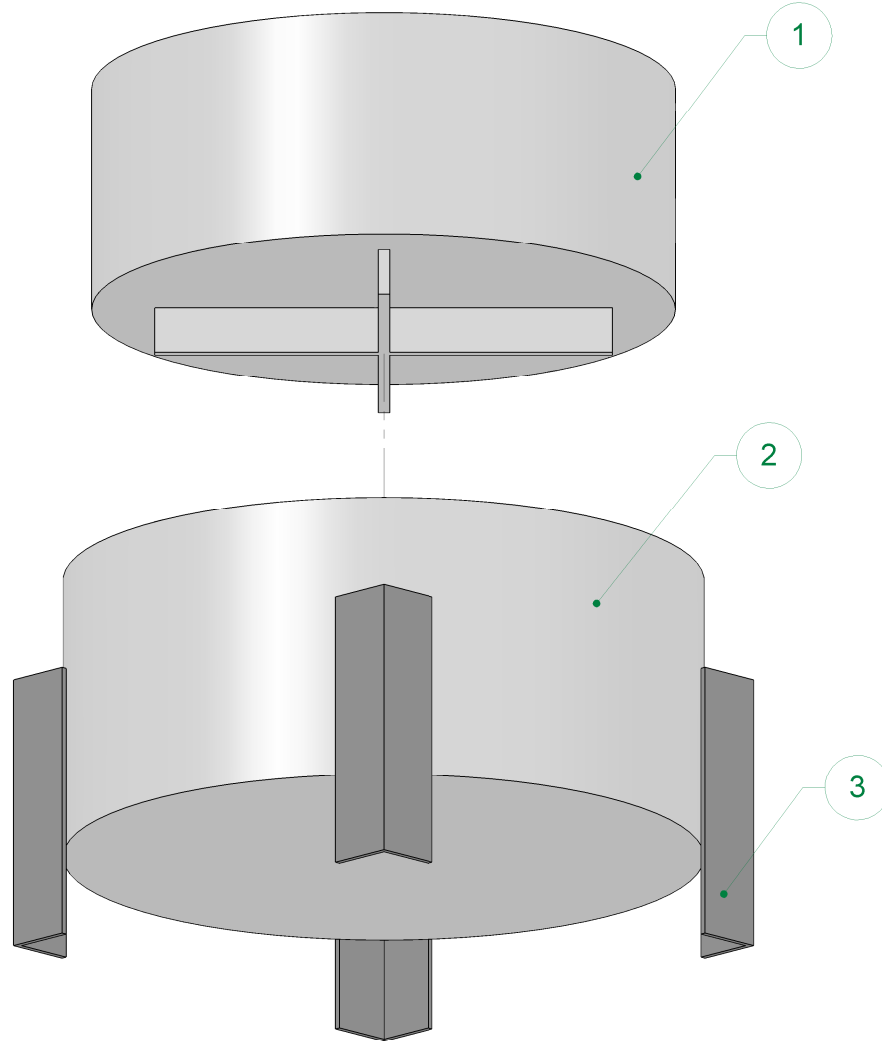
4

3

2

1

BOM Table				
Item NO.	Part Number	Description	Qty	Material
1	Bottom Head Section	Inner Vessel Bottom Section	1	SA-516 70 @ 200F
2	Outer Shell	Outer Jacket Bottom Section	1	SA-516 70 @ 200F
3	Leg	1.5" Angle Iron	4	SA-36



UNLESS OTHERWISE SPECIFIED  
 DIMENSIONS ARE IN INCHES  
 INTERPRET DIMENSIONS AND TOLERANCES  
 PER ASME Y14.5M-1994

TOLERANCES APPLY AS SHOWN BELOW

0 PL DEC	± 0.2
1 PL DEC	± 0.1
2 PL DEC	± 0.01
3 PL DEC	± 0.005
ANGLES	± .1°
SURFACE ROUGHNESS	32 μ in

THIRD ANGLE PROJECTION

MATERIAL: Material <not specified>  
 FINISH:

REV	DESCRIPTION	DATE	APVD
REVISIONS			
Pressure Vessel Engineering 120 Randall Drive, Suite B Waterloo, Ontario N2V 1C6 P: 519-880-9808 F: 519-880-9810 <a href="http://www.pveng.com">http://www.pveng.com</a> info@pveng.com			
CUSTOMER XYZ Vessel Corp.		TITLE <b>Jacket Vessel Bottom Section</b>	
PROJECT PVE-3259		DRAWING NO. <b>B Vessel Assembly</b>	
DRAWN BY BTV	DATE 01/12/09	SIZE <b>B</b>	REVISION <b>-</b>
CHECKED BY	DATE	SCALE 1:4	WEIGHT 54.604 lbs
APPROVED	DATE	SHEET 1 OF 2	

D

C

B

A

D

C

B

A

8

7

6

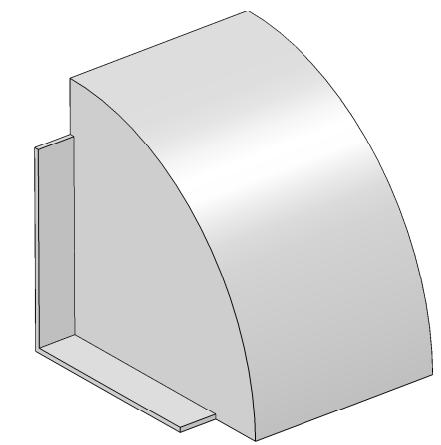
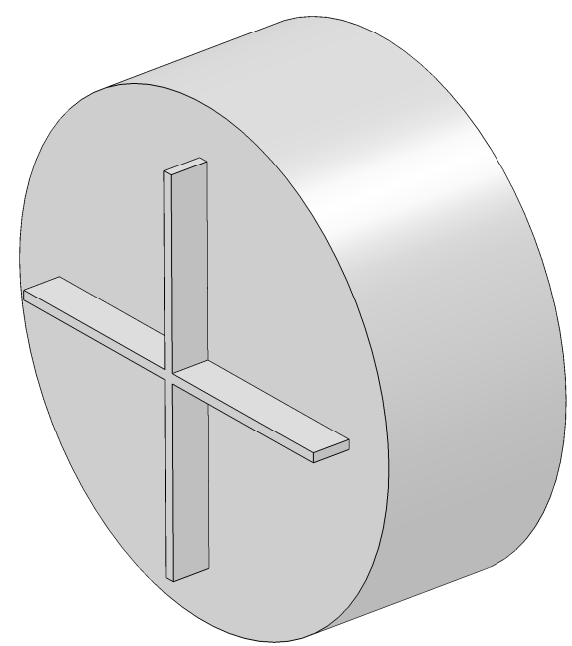
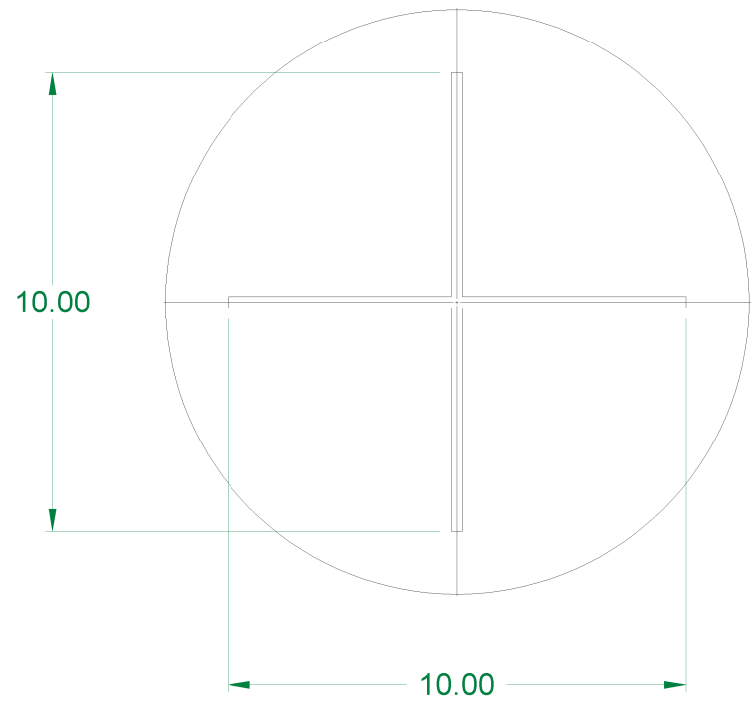
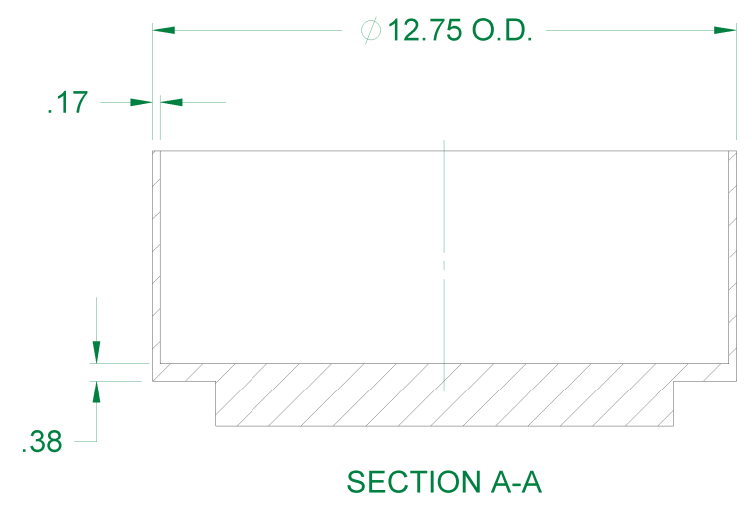
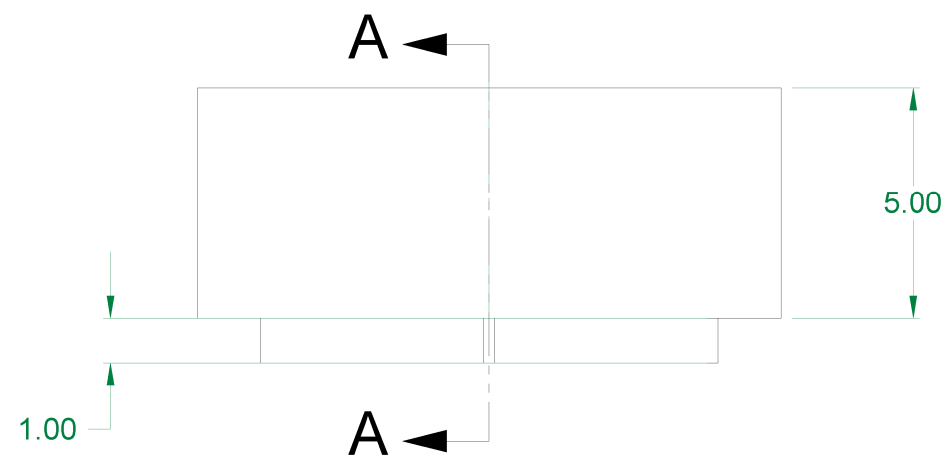
5

4

3

2

1



COMPLETE INNER VESSEL BOTTOM SECTION

MODEL AS USED IN FEA

<p><b>UNLESS OTHERWISE SPECIFIED</b> DIMENSIONS ARE IN INCHES INTERPRET DIMENSIONS AND TOLERANCES PER ASME Y14.5M-1994</p> <p>TOLERANCES APPLY AS SHOWN BELOW</p> <table border="0"> <tr><td>0 PL DEC</td><td>± 0.2</td></tr> <tr><td>1 PL DEC</td><td>± 0.1</td></tr> <tr><td>2 PL DEC</td><td>± 0.01</td></tr> <tr><td>3 PL DEC</td><td>± 0.005</td></tr> <tr><td>ANGLES</td><td>± 1°</td></tr> <tr><td>SURFACE ROUGHNESS</td><td>32 μ in</td></tr> </table> <p><b>THIRD ANGLE PROJECTION</b></p> <p>MATERIAL: SA-516 70 @ 200F FINISH:</p>		0 PL DEC	± 0.2	1 PL DEC	± 0.1	2 PL DEC	± 0.01	3 PL DEC	± 0.005	ANGLES	± 1°	SURFACE ROUGHNESS	32 μ in	<p>SolidWorks MAINTAINED DATA CHANGES SHALL BE INCORPORATED ELECTRONICALLY BY THE DESIGN ACTIVITY</p> <p><b>PROPRIETARY</b></p> <p>NO PART OF THIS DOCUMENT MAY BE REPRODUCED, STORED IN A RETRIEVAL SYSTEM, OR TRANSMITTED IN ANY FORM, WITHOUT THE WRITTEN PERMISSION OF XYZ Vessel Corp</p> <p>CUSTOMER: XYZ Vessel Corp PROJECT: PVE-3259 DRAWN BY: BTV CHECKED BY: APPROVED:</p> <p>DATE: 01/12/09 DATE: DATE:</p>		<p><b>PVEng</b> Pressure Vessel Engineering 120 Randall Drive, Suite B Waterloo, Ontario N2V 1C6 P: 519-880-9808 F: 519-880-9810 http://www.pveng.com info@pveng.com</p> <p>TITLE: <b>Inner Vessel Bottom Section</b></p> <p>SIZE: <b>B</b> DRAWING NO: <b>Vessel Assembly</b> REVISION: <b>-</b></p> <p>SCALE: 1:4 WEIGHT: 5.809 lbs SHEET 2 OF 2</p>	
0 PL DEC	± 0.2																
1 PL DEC	± 0.1																
2 PL DEC	± 0.01																
3 PL DEC	± 0.005																
ANGLES	± 1°																
SURFACE ROUGHNESS	32 μ in																