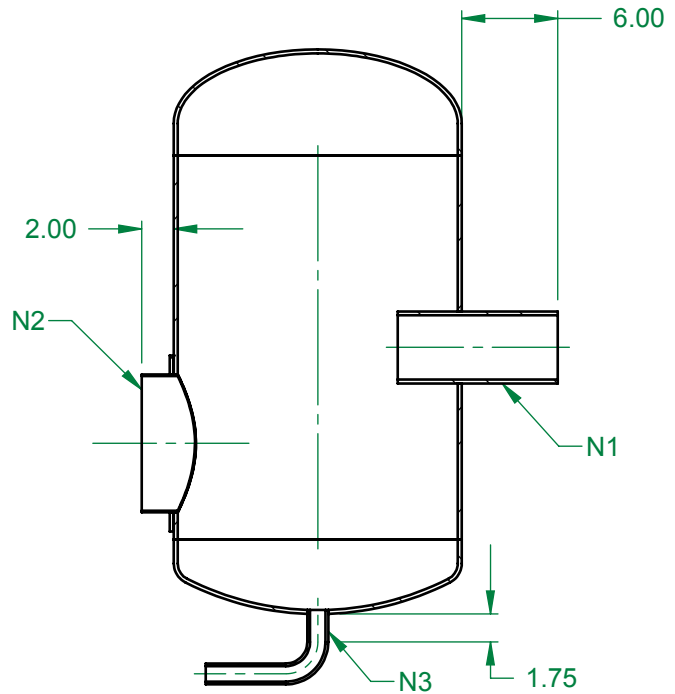
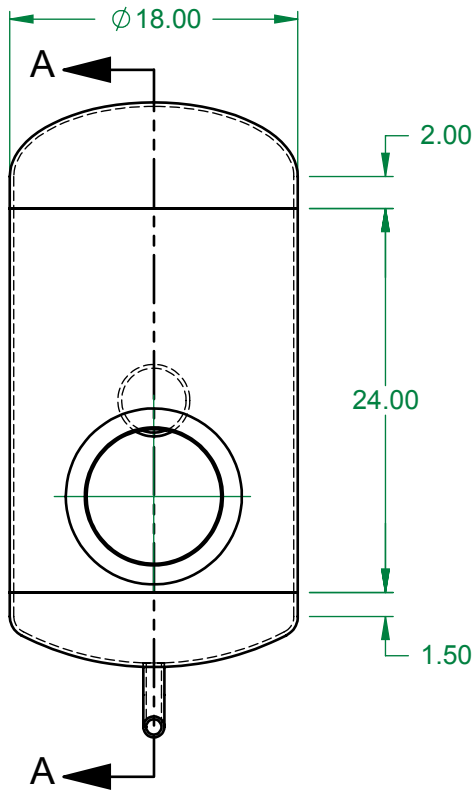


| Bill of Material | | | | |
|------------------|-------------|----------------------|-----|-------------|
| Item No. | Part Number | Description | Qty | Material |
| 1 | Shell | 18" OD, ? Wall | 1 | SA-516 70 |
| 2 | SE Head | 18" Head, ? Nom Wall | 1 | SA-516 70 |
| 3 | F&D Head | 18" Head, ? Nom Wall | 1 | SA-516 70 |
| 4 | N1 | 4" SCH ? Pipe | 1 | SA-106 Gr.B |
| 5 | N2 | 8" SCH 5 Pipe | 1 | SA-106 Gr.B |
| 6 | N3 | 1" SCH ? Pipe | 1 | SA-106 Gr.B |
| 7 | Repad ? | ? OD, ? Thick | 1 | SA-516 70 |

Design Data:
 Design Pressure: 300 PSI
 Maximum Temperature: 400°F
 Item 7 was added after completing calculations

SKETCH BEFORE CALCULATIONS



SECTION A-A

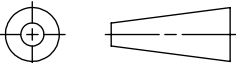
UNLESS OTHERWISE SPECIFIED
 DIMENSIONS ARE IN INCHES

INTERPRET DIMENSIONS AND TOLERANCES
 PER ASME Y14.5M-1994

TOLERANCES APPLY AS SHOWN BELOW

| | |
|-------------------|---------|
| 0 PL DEC | ± 0.2 |
| 1 PL DEC | ± 0.1 |
| 2 PL DEC | ± 0.01 |
| 3 PL DEC | ± 0.005 |
| ANGLES | ± 1° |
| SURFACE ROUGHNESS | 32 μ in |

THIRD ANGLE PROJECTION



MATERIAL:

FINISH:

SolidWorks MAINTAINED DATA
 CHANGES SHALL BE INCORPORATED
 ELECTRONICALLY BY THE DESIGN ACTIVITY

PROPRIETARY

NO PART OF THIS DOCUMENT MAY BE REPRODUCED,
 STORED IN A RETRIEVAL SYSTEM, OR TRANSMITTED IN
 ANY FORM, WITHOUT THE WRITTEN PERMISSION OF
 Pressure Vessel Engineering Ltd.

CUSTOMER
 Pressure Vessel Engineering Ltd.

PROJECT
 Sample Vessel

DRAWN BY
 BTV DATE
 02/03/09

CHECKED BY DATE

APPROVED DATE



Pressure Vessel Engineering Ltd.
 120 Randall Drive, Suite B Waterloo, Ontario N2V 1C6
 P: 519-880-9808 F: 519-880-9810
<http://www.pveng.com> info@pveng.com

TITLE
**Design Sketch
 Default**

SIZE
A Vessel Sketch

SCALE
 1:12

REVISION
 -